



INFRALEUNA®

HEATING TERMINAL INFRALEUNA

NEW INFRASTRUCTURE FACILITY AT THE LEUNA CHEMICAL SITE

- 1 Background and requirements
- 2 New infrastrucutre facility: heating terminal
- 3 Connected services
- 4 Your benefit
- 5 Your contact for the next steps

1. BACKGROUND AND REQUIREMENTS

- Changes in product flows and new supply chains are increasing the need for efficient heating solutions to reliably restore temperature-sensitive raw materials and products to the required temperature and pumpability following long journeys.
- Security of supply requires controlled, repeatable heating processes.
- Customised solutions increase operational complexity and cost uncertainty.

Solution

New infrastructure facility:

Construction of a central heating terminal at the Leuna chemical site

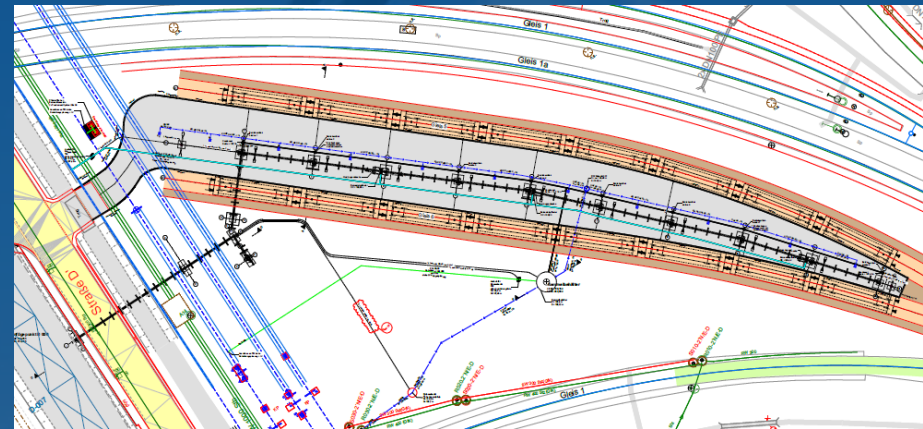
Commissioning Q1/2026



2. NEW INFRASTRUCTURE FACILITY: HEATING TERMINAL

Key features:

- Terminal suitable for temperature-sensitive applications
- Track layouts with 2 tracks, each with 8 berths
- Heating of up to 16 wagons within max. 48 hours from -14°C to 150°C using steam
- Integrated steam reduction unit for precise temperature control
 - Controlled heating processes, even below 150°C
- Flexible temperature control is possible for a wide range of different products



3. CONNECTED SERVICES

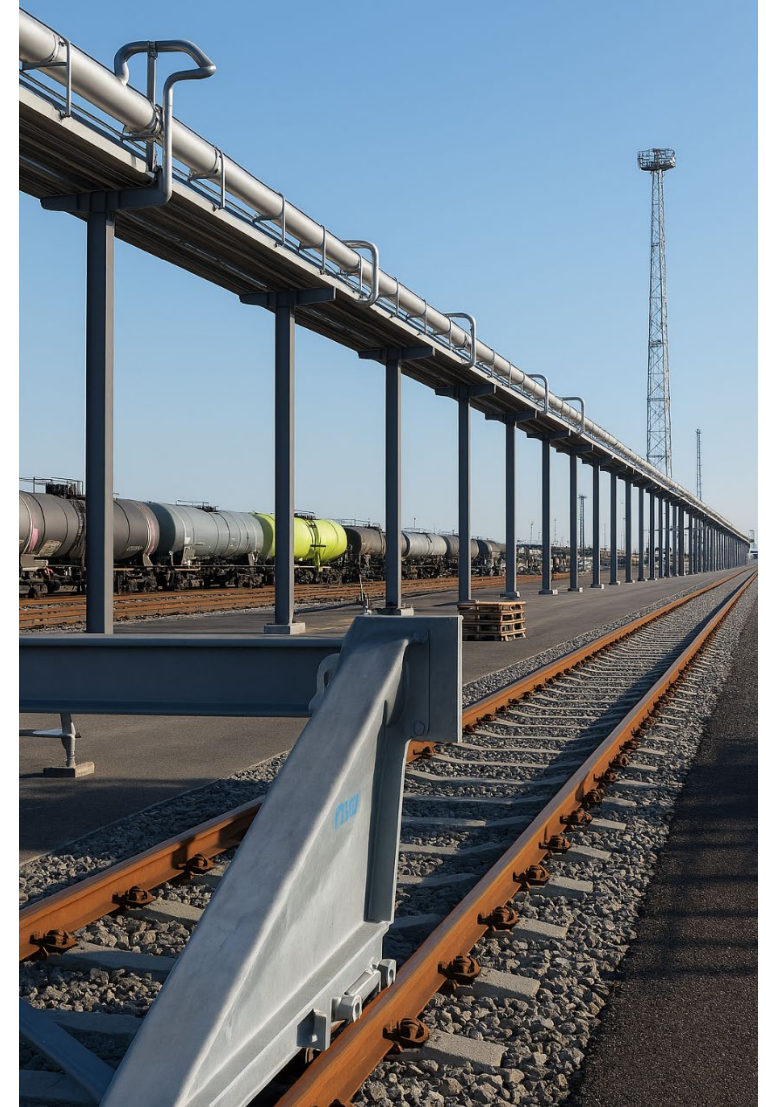


Services: InfraLeuna Heating terminal

- Handover of freight wagons at Großkorbetha station and shunting services to the heating terminal
- Receipt and delivery of tankers/tank containers
- Connecting and disconnecting the steam pipes to the heating coils
- Regulation of the steam supply
- Monitoring of the entire heating process
- Option for the controlled opening of dome covers using a mobile stair tower

Additional logistic services

- Transport services provided by our own rail transport company
- Trucking services
- Vehicle fleet and damaged vehicle management
- Storage of tank containers



3. CONNECTED SERVICES

Perspectives:

- Given the foundations that have been laid, a wide range of raw materials are very well suited to this terminal.
- The terminal is designed with the future in mind and offers the flexibility to integrate heating points for road vehicles.
- With a further modification, it is also possible to heat tankers and ISO Containers.



4. YOUR BENEFIT – GEOGRAPHICAL LOCATION



road



rail

- Central location in Leuna with the excellent rail connections within Germany and European markets
- Fast and reliable distribution, usually within 48 hours (subject to validation)
- Excellent infrastructure links:
 - by road: direct connection to the A9, A14 and A38 motorway junction
 - by rail: internal railway network with direct access to long-distance freight transport
 - by air: just 25 km from Leipzig/Halle international freight hub
 - by water: four nearby inland ports (e.g. Halle/Trotha, 23 km)

4. YOUR BENEFIT



INFRALEUNA®



Its possible to transport raw materials **over long distances** (e.g. from Eastern Europe or Asia) in freight wagons



High-performance, state-of-the-art **infrastructure and logistics services from a single source**



Excellent **transport links** to road and rail networks



A **self-contained chemical site** with its own security team and fire brigade



Cost benefits: potential **cost savings** through wider use

5. Your contact for the next steps



- 1 Information & Coordination Meetings:**
Individual assessment of your requirements, volumes and technical specifications
- 2 Registration & Capacity Planning:**
Coordination of scheduled deliveries to ensure optimal scheduling at the heating terminal
- 3 Contract/ Usage Agreement:**
Determination of the billing model and organisational procedures
- 4 Start of regular operations:**
Use of the heating terminal in accordance with the agreed process

We look forward to hearing from you!



Christian Schlunk
Head of Department Freight forwarding / Inventory management

InfraLeuna GmbH | Am Haupttor
Bau 4310 | 06237 Leuna
c.schlunk@infraleuna.de
+49 3461 43-3860



INFRALEUNA®

Service Portfolio InfraLeuna Logistics

- Freight forwarding services in road and rail freight transport, as well as overseas transport and air freight
- Own vehicle fleet and own rail transport company
- Maintenance of freight wagons
- Transport equipment and damaged wagon management
- Tank cleaning facility
- Fuel supply
- Handling and storage of containers

